



مختبر ايدنت للأسنان
IDENT DENTAL LABORATORY



Ident Dental Laboratory from Bahrain is a full-service dental lab establish in 2019, which manufactures dental prosthesis, such as crowns, bridges, implants, dentures, partials, and orthodontic appliances such as retainers, splints, night guards, sports guards with using the latest dental technologies. Ident Dental Laboratory is being established with the goal of providing dentists with restorations of superior quality and value.



REMOVABLES ACRYLIC

COMPLETE DENTURE -HIGH IMPACT UPPER & LOWER	BHD 55.000
UPPER OR LOWER COMPLETE DENTURE	BHD 30.000
ACRYLIC PARTIAL DENTURE (1 TO 3 UNITS)	BHD 15.000
ACRYLIC PARTIAL DENTURE (4 TO 6 UNITS)	BHD 20.000
ACRYLIC PARTIAL DENTURE (7 TO 13 UNITS)	BHD 25.000



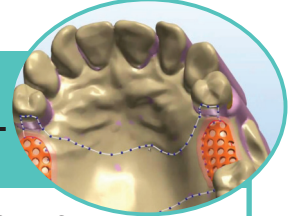
REMOVABLES (UN BREAKABLE) USA

COMPLETE DENTURE (KARADENT) UPPER & LOWER	BHD 110.000
UPPER OR LOWER (KARADENT) COMPLETE DENTURE	BHD 60.000
UN BREAKABLE PARTIAL DENTURE (1 TO 3 UNITS)	BHD 25.000
UN BREAKABLE PARTIAL DENTURE (4 TO 6 UNITS)	BHD 35.000
UN BREAKABLE PARTIAL DENTURE (7 TO 13 UNITS)	BHD 45.000



Our Services

CPD (DIGITAL) BY 3 SHAPE DENTAL DESIGNER SYSTEM



CPD (1 TO 3 UNITS) CLASP & REST	BHD 45.000
CPD (4 TO 8 UNITS) CLASP & REST	BHD 55.000
CPD FULL UPPER OF LOWER PLATES	BHD 65.000

FIXED - INLAY , ONLAY , VENEERS, CROWN, BRIDGES & IMPLANTS CAD/CAM

CERAMILL ZIRCONIA WITH EMAX CERAM LAYERING (PER UNIT)	BHD 45.000
CERAMILL ZIRCONIA ZOLID (FULL ZIRCONIA) (PER UNIT)	BHD 45.000
3D MULTILAYER SHADE (FULL ZIRCONIA) (PERUNIT)	BHD 45.000
E. MAX PRESS VENEERS OR CROWNS (PER UNIT)	BHD 40.000
P.F.M PER UNIT / IPS STYLE Ceram (PER UNIT)	BHD 25.000
FULL METAL (PER UNIT)	BHD 18.000





مختبر ايدنت للأسنان
IDENT DENTAL LABORATORY



Digital work flow

Compatibility with Cerec®, iTero™, 3M True Definition™, Carestream Dental, 3Shape®, Planmeca PlanScan®(formerly E4D), and other intraoral scanning devices.

We work with metal free restorations all digitally designed and milled out of the highest and latest materials available in dentistry. We work with the most popular and most aesthetic materials in the industry giving dentists and their patients the most beautiful smiles.

For adding us on 3 shape :
order@ident-dl.com

For adding us on Sirona :
identbahrain@gmail.com

For Any other STL files Please email us on :
order@ident-dl.com

TEMPORARIES



TEMPORARY CROWN OR BRIDGE
(SHORT TERM) SELF CURED
(PER UNIT) **BHD 3.000**

TEMPORARY CROWN OR BRIDGE PMMA
CAD/CAM (LONG TERM) (PER UNIT)
BHD 10.000

iDent SNAP ON SMILE UPPER OR LOWER
(NEW) (PER JAW) **BHD70.000**

APPLIANCES & OTHERS

BLEACHING TRAY UPPER OR LOWER
BHD 5.000

NIGHT GUARD SOFT UPPER OR LOWER
BHD 15.000

NIGHT GUARD HARD UPPER OR LOWER
BHD 20.000

DENTURE REPAIR SELF CURED
BHD 6.000

DENTURE TOOTH ADDITION TO OLD
DENTURE **BHD 8.000**

DENTURE RELINE **BHD 15.000**

DENTURE REBASE **BHD 18.000**

DIAGNOSTIC WAX UP (PER UNIT)
BHD 3.000

ORTHODONTICS

HAWELY RETAINER UPPER OR LOWER
BHD 18.000

ESSIX RETAINER UPPER OR LOWER
BHD 15.000

FIXED BONDED RETAINER UPPER OR
LOWER **BHD 6.000**

TRANSPLATAL ARCH **BHD 20.000**

QUAD HELIX **BHD 25.000**

U.R.A WITH EXPANSION SCREW
BHD 20.000

U.R.A WITH ANTERIOR OR POSTERIOR
BITEPLATE **BHD 25.000**

U.R.A WITH Z- .SPRINT **BHD 20.000**

TWIN BLOCK **BHD 45.000**

ROBERT RETRACTOR **BHD 18.000**

NANCE APPLIANCE **BHD 20.000**

R.M.E **BHD 25.000**

OCCLUSAL SPLINT HARD
UPPER OR LOWER
BHD 25.000

